

3402 Basket Sled Base Chair

Dimensions:

W 24" D 21.75" H 31.5" St H 18" Arm H (front) 25"



Frame:

Frame triple chrome plated or painted to match seat shell. Color details found in Seat Shell information below. Painted frame suitable for outdoor use without upholstery.



Stackability:

Not Stackable



Seat Shell:

Frame and seat colors: white 00, black 10, tan 13, bordeaux 22, olive drab 35, and brown 39.

Technopolymer is an injection molded polymer - durable, impact resistant, non-toxic, color-core material. Highly resistant to abrasion, heat, and structural stress. Anti-static, anti-UV, fully recyclable, and made from



Upholstery:

Select from two options - a plastic shell w/upholstered frontal seat pad (Uph Cover), or fully upholstered (Uph).



(Uph Cover)



(Uph)

Fabric Requirements:

Full upholstery: 1.75 yards (31.5 Square Feet) for one complete chair

Contrasting 2-Tone* upholstery: 1 yard of additional fabric (18 Square Feet) - for 1 or 2 chairs

Frontal upholstery cover: 2 yards (36 Square Feet) for one complete chair

* outside upholstery shell in one color, inner seat in a second color

Indoor - Outdoor Use:

Basket is suitable for outdoor use with a painted or technopolymer frame (white, black or aluminum color standard), only on the 4 leg, sled and barstool versions, with no upholstery.



Environmental Considerations:

Basket is produced in compliance with ISO 9001 and 14001 standards.

At Gordon we strive to incorporate best practices with regard to environmental sustainability. We encourage clients to reference our sustainability overview at: www.gordonisgood.com/sustainability.





Full Upholstery - OFC Basket specific 'original factory coverings':

	Gr E	Gr B	Gr DK
Full Uph - Chrome Frame	1064	1242	1353
Full Uph - Painted Frame	1109	1284	1391
Frontal Overlay - Chrome	1082	n/a	1220
Frontal Overlay - Painted	1120	n/a	1258

** please see following pages for details on OFC choices*

Tecopolymer shell no upholstery:

Chrome Frame
\$460 List

Painted Frame
\$498 List

Full Upholstery - standard grades:

	COM	COL	Gr3	Gr4	Gr5	Gr6	Gr7	Gr8	Gr9
Full Uph - Chrome	1238	1362	1355	1413	1473	1530	1618	1705	1798
Full Uph - Painted	1273	1400	1390	1448	1508	1565	1653	1740	1833
Frontal Chrome	1304	1388	1438	1504	1572	1638	1738	1838	1944
Frontal Painted	1342	1426	1476	1542	1610	1676	1776	1876	1982



Basket Upholstery - OFC fabric options

Kvadrat Umami - 90% wool / 10% nylon Grade DK



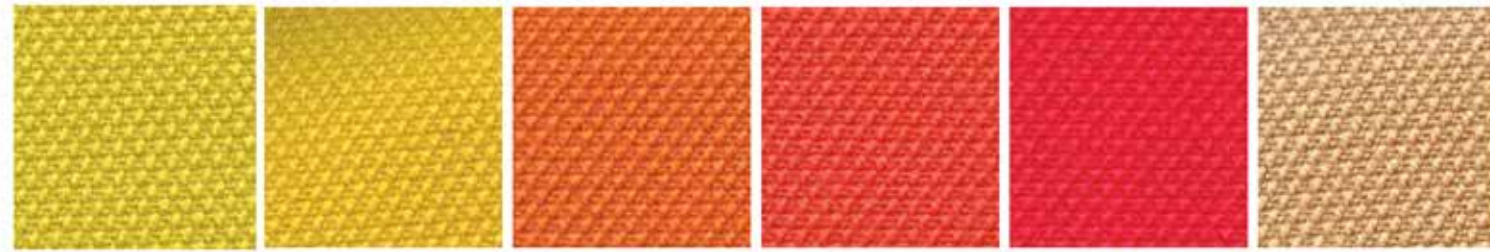
Basket Upholstery - OFC fabric options

Kvadrat Remix 2 - 90% wool / 10% nylon Grade DK



Basket Upholstery - OFC fabric options

Kvadrat Steelcut 2 - 90% wool / 10% nylon Grade DK



435 445 535 550 635 255



365 655 975 950 835 780



760 685 625 140 155 180



190 110

Basket Upholstery - OFC fabric options

Fidivi King - 100% polyester Trevira CS Grade K



4021 3082 3030 6001 6052 7022



8011 1008 1012 1033 2003 5001



6091 7019 1025 8006 4032 6034



2007 8032

Basket Upholstery - OFC fabric options

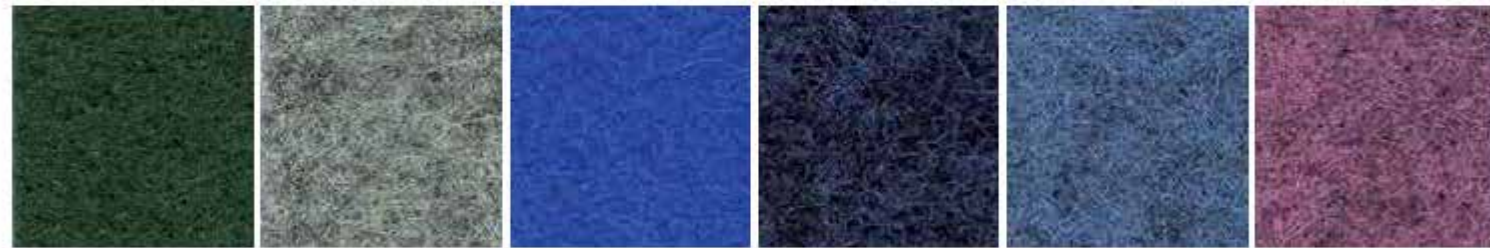
Camira Blazer - 100% virgin wool Grade B



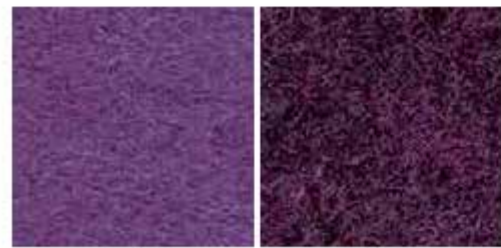
CUZ47 CUZ86 CUZ67 CUZ1B CUZ88 CUZ82



CUZ63 CUZ66 CUZ18 CUZ1K CUZ1C CUZ1L



CUZ1N CUZ1E CUZ24 CUZ62 CUZ1W CUZ1X



CUZ1Z CUZ32

Basket Upholstery - OFC fabric options

Synthetic leather - 77% pvc / 3% pu / 20% cotton Grade E



1 2 3 5 6 7



8 9 10 11 14 15



16 17 19 21 22 23



26 28