

3400 Basket Four Leg Chair

Dimensions:

W 24" D 21.75" H 31.5" St H 18" Arm H (front) 25"



Frame:

Frame triple chrome plated or painted to match seat shell. Color details found in Seat Shell information below. Painted frame suitable for outdoor use without upholstery.



Stackability:

Basket may be stacked 6 high on the ground.



Seat Shell:

Frame and seat colors: white 00, black 10, tan 13, bordeaux 22, olive drab 35, and brown 39.

Technopolymer is an injection molded polymer - durable, impact resistant, non-toxic, color-core material. Highly resistant to abrasion, heat, and structural stress. Anti-static, anti-UV, fully recyclable, and made from post consumption materials.



Upholstery:

Select from two options - a plastic shell w/upholstered frontal seat pad (Uph Cover), or fully upholstered (Uph).



(Uph Cover)



(Uph)

Fabric Requirements:

Full upholstery: 1.75 yards (31.5 Square Feet) for one complete chair

Contrasting 2-Tone* upholstery: 1 yard of additional fabric (18 Square Feet) - for 1 or 2 chairs

Frontal upholstery cover: 2 yards (36 Square Feet) for one complete chair

* outside upholstery shell in one color, inner seat in a second color

Indoor - Outdoor Use:

Basket is suitable for outdoor use with a painted or technopolymer frame (white, black or aluminum color standard), only on the 4 leg, sled and barstool versions, with no upholstery.



Environmental Considerations:

Basket is produced in compliance with ISO 9001 and 14001 standards.

At Gordon we strive to incorporate best practices with regard to environmental sustainability. We encourage clients to reference our sustainability overview at: www.gordonisgood.com/sustainability.





3400 Four Leg Chair



3401 Techno polymer Leg Chair



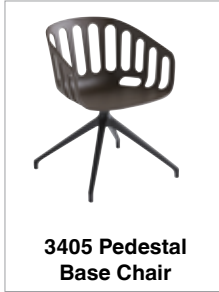
3402 Sled Base Chair



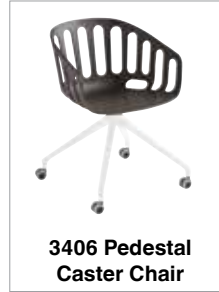
3403 Cantilever Base Chair



3404 Basket Wood Leg Chair



3405 Pedestal Base Chair



3406 Pedestal Caster Chair



Full Upholstery - OFC Basket specific 'original factory coverings':

	Gr E	Gr B	Gr DK
Full Uph - Chrome Frame	1038	1216	1322
Full Uph - Painted Frame	1096	1276	1382
Frontal Overlay - Chrome	1049	n/a	1187
Frontal Overlay - Painted	1104	n/a	1242

* please see following pages for details on OFC choices

Tecnopolymer shell no upholstery:

Chrome Frame
\$427 List

Painted Frame
\$482 List

Full Upholstery - standard grades:

	COM	COL	Gr3	Gr4	Gr5	Gr6	Gr7	Gr8	Gr9
Full Uph - Chrome	1204	1324	1321	1379	1439	1496	1584	1671	1764
Full Uph - Painted	1260	1386	1377	1435	1495	1552	1640	1727	1820
Frontal Chrome	1271	1355	1405	1471	1539	1605	1705	1805	1911
Frontal Painted	1326	1410	1460	1526	1594	1660	1760	1860	1966



Basket Upholstery - OFC fabric options

Kvadrat Umami - 90% wool / 10% nylon Grade DK



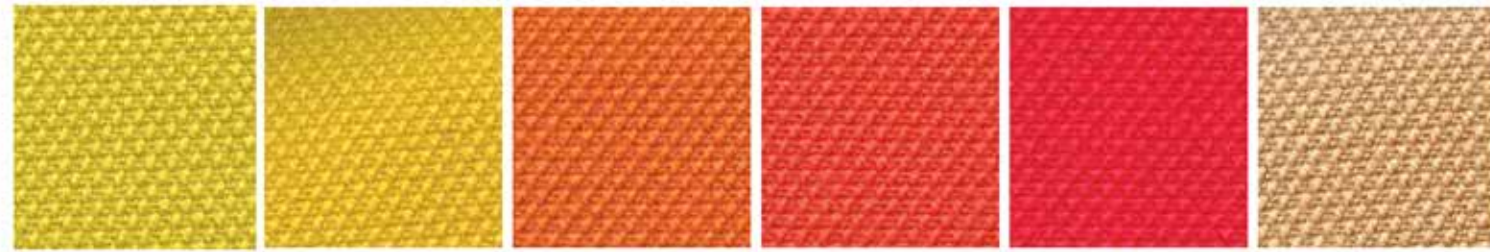
Basket Upholstery - OFC fabric options

Kvadrat Remix 2 - 90% wool / 10% nylon Grade DK



Basket Upholstery - OFC fabric options

Kvadrat Steelcut 2 - 90% wool / 10% nylon Grade DK



435 445 535 550 635 255



365 655 975 950 835 780



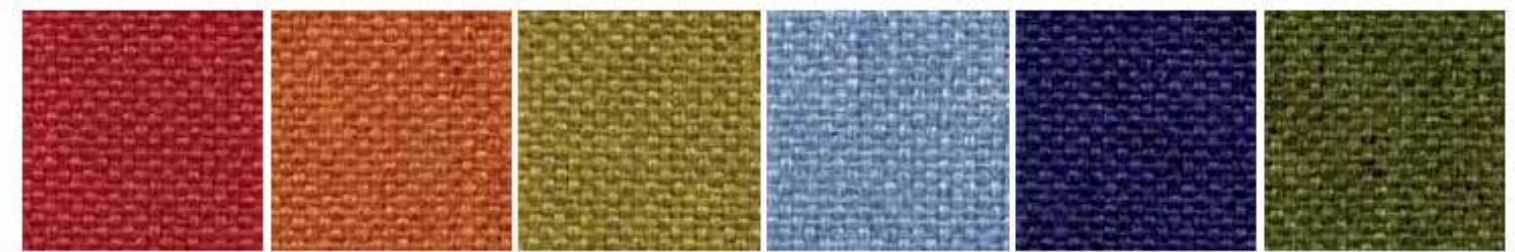
760 685 625 140 155 180



190 110

Basket Upholstery - OFC fabric options

Fidivi King - 100% polyester Trevira CS Grade K



4021 3082 3030 6001 6052 7022



8011 1008 1012 1033 2003 5001



6091 7019 1025 8006 4032 6034



2007 8032

Basket Upholstery - OFC fabric options

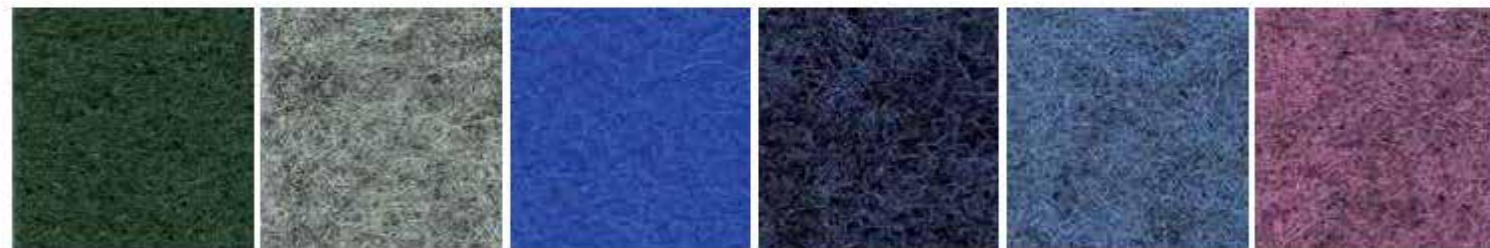
Camira Blazer - 100% virgin wool Grade B



CUZ47 CUZ86 CUZ67 CUZ1B CUZ88 CUZ82



CUZ63 CUZ66 CUZ18 CUZ1K CUZ1C CUZ1L



CUZ1N CUZ1E CUZ24 CUZ62 CUZ1W CUZ1X



CUZ1Z CUZ32

Basket Upholstery - OFC fabric options

Synthetic leather - 77% pvc / 3% pu / 20% cotton Grade E



1 2 3 5 6 7



8 9 10 11 14 15



16 17 19 21 22 23



26 28